
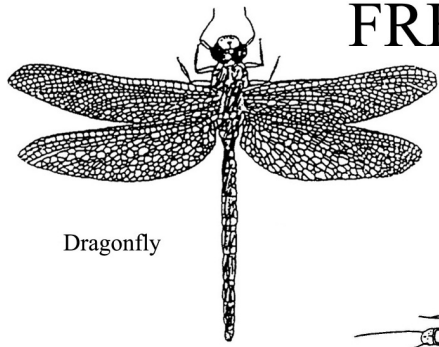


FRESHWATER INVERTEBRATES OF ARBURY PARK

 = Microscopic (not easily identified with the naked eye)



Dragonfly



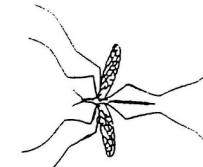
Pond Skater



Caddisfly



Springtail



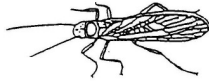
Cranefly



Fishing Spider



Damselfly



Stonefly



Mayfly



Water Strider



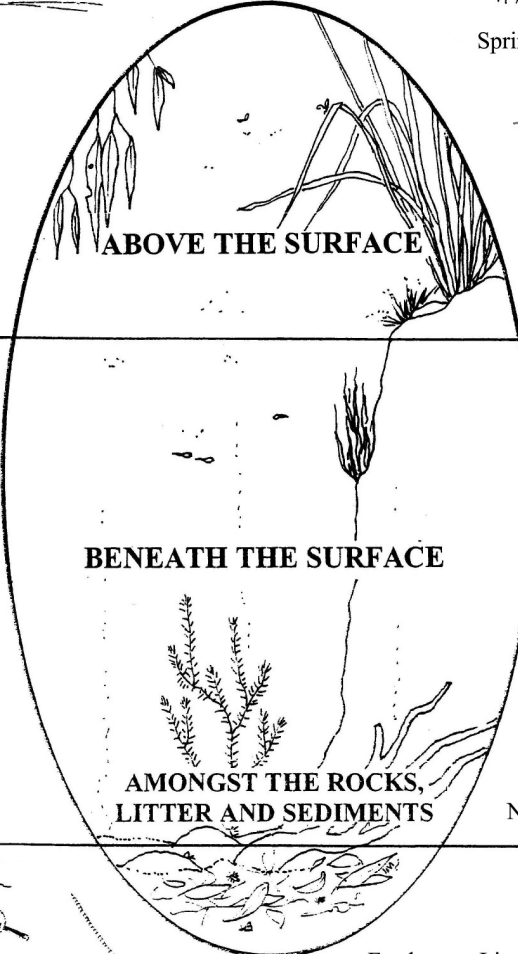
Midge



Biting Midge



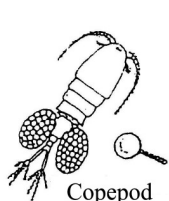
Mosquito



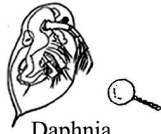
ABOVE THE SURFACE

BENEATH THE SURFACE

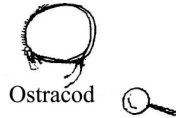
AMONGST THE ROCKS, LITTER AND SEDIMENTS



Copepod



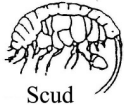
Daphnia



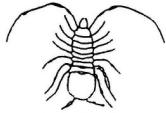
Ostracod



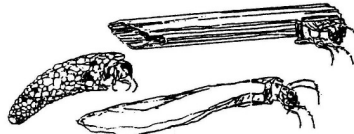
Water Mite



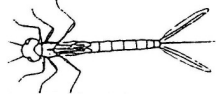
Scud



Isopod



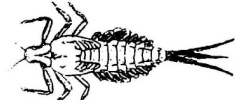
Caddisfly Larva



Damselfly nymph



Stonefly nymph



Mayfly nymph



Water Boatman



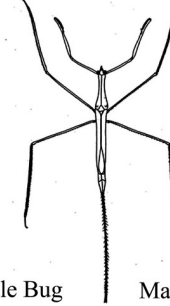
Back Swimmer



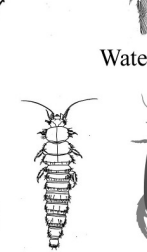
Mosquito Larva



Mosquito Pupa



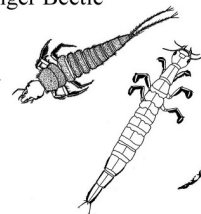
Needle Bug



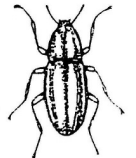
Marsh Beetle Larva



Water Scavenger Beetle

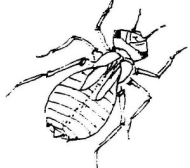


Diving Beetle



Riffle Beetle

Dragonfly Nymph



Leech

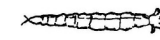


Hydra

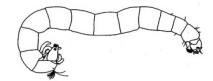


Flatworm

Freshwater Limpet



Cranefly Larva

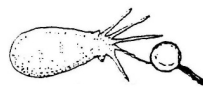


Midge Larva

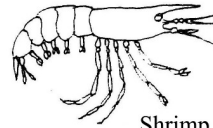
Dragonfly Nymph



Freshwater worm

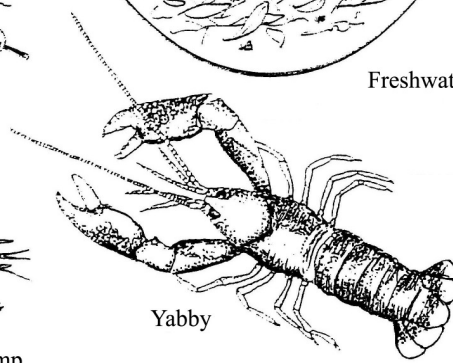


Temnocephalid



Shrimp

Yabby



Bladder Snail



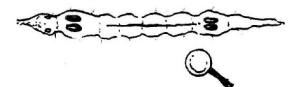
Freshwater Cockle



Biting Midge Larva



Freshwater Snail



Phantom Midge Larva